



**WYNDHAM GRAND**

LA CALA GOLF RESIDENCES

**EXPERIENCE THE EXTRAORDINARY**



The Essence of  
Contemporary Elegance

---

# Discover the Difference: A World-Leading Hotel Brand

Welcome to the captivating World of Wyndham – a renowned hotel brand boasting over 9000 properties across 95 countries. It stands as a beacon of diversity and excellence in the realm of hospitality.

Nestled within this collection is Wyndham Grand, the epitome of distinction in the Wyndham family. Reserved for the top 1% of hotels and resorts, it embodies unparalleled quality, design and service, symbolising a truly exceptional experience amidst luxury and sophistication.

---







## A Lifestyle Beyond Compare

Wyndham Grand - La Cala Golf Residences welcomes you to join a discerning group of owners who enjoy luxury and hospitality at their finest. Wyndham Grand delivers exceptional quality in every aspect of your living experience, from modern design and technology to exquisite craftsmanship married with unrivalled services.

This curated collection of residences elevates the concept of home, providing you with an extraordinary lifestyle experience.

Each residence is meticulously designed to cater to your every need, offering comfort, convenience, and style in perfect harmony.

Wyndham Hotels and Resorts is the industry-leading pioneer in developing the concept of branded residences worldwide. From Mexico to Dubai, from Thailand to the USA, Wyndham Grand La Cala Golf Residences represents the pinnacle of luxury lifestyle based residences in Europe.

---

**Your home** is a reflection of your refined taste and **sophistication.**







# The Essence of Contemporary Elegance

Wyndham Grand La Cala Golf Residences is a unique project of opulent fairway homes, combining modern and organic elements. The creation of a warm and welcoming ambience gives you the opportunity to bask in both your indoor and outdoor spaces.

Enjoy a world of choice with three distinct types of customisable townhouses, each echoing its own unique charm and character. These homes are meticulously designed to harmonize with the natural contours of the land, offering you a symphony of orientations and vistas.

Whether you prefer the intimacy of a two-bedroom abode or the spaciousness of a three-bedroom sanctuary, each option is a testament to contemporary design. Here, natural, organic elements dance with sleek, modern lines to create a living space that's both timeless and avant-garde.

This is more than just a home; it's a lifestyle choice that embraces tranquillity, luxury, and the extraordinary beauty of your surroundings.

---

It's not just a home, it's an **extraordinary lifestyle.**









# Natural Elements in Harmony

Step into your home and feel the earthy harmony of natural elements that create both a homely and elegant atmosphere. The warm wood, the rugged aged steel and the smooth stone contrast beautifully with the crisp white walls and floors, adding texture and character to your space.

The spacious, open plan layout welcomes you to unwind and savour the stunning views from the living area, with floor-to-ceiling windows that lead to the expansive terrace. There, you can inhale the fresh air and marvel at the lush greenery of the golf course, serenity at its best.

---











## Luminous Living; Sumptuous Dining

With floor to ceiling windows and double-wide facades, these homes have been designed to maximise the light and warmth the Costa del Sol offers year round, not to mention the incredible views enjoyed by this development.

The exclusive Dica kitchen is fully-fitted with top-of-the-range Miele appliances, and has a kitchen island with breakfast bar for casual meals. From the look and feel of the smooth surface of the kitchen counter you can appreciate the quality and craftsmanship of the design.

For the more special of occasions, the dining area offers a distinct space to savour your preferred culinary delights and enjoy the company of friends and family.

Wyndham Grand La Cala Golf Residences are designed to make you feel at home, while indulging your senses and elevating your lifestyle.

---















## Deluxe Bedrooms For a Perfect Night's Slumber

The primary suite is a luxurious haven, with a spa-like ensuite bathroom, a dressing area, and stunning floor-to-ceiling windows that open onto a private terrace. Here, you can enjoy the breathtaking scenery in peaceful solitude.

---









## Solarium Bliss – Rooftop Retreat

The rooftop solarium is the perfect place to experience the beauty of Andalusia. With an outdoor kitchen and barbeque, you can access it from an external staircase and enjoy the tranquil surroundings. Whether you want to relax alone or entertain your friends and family, the solarium is the ideal spot; from peaceful sunsets to lively dinners, and everything in between.

---







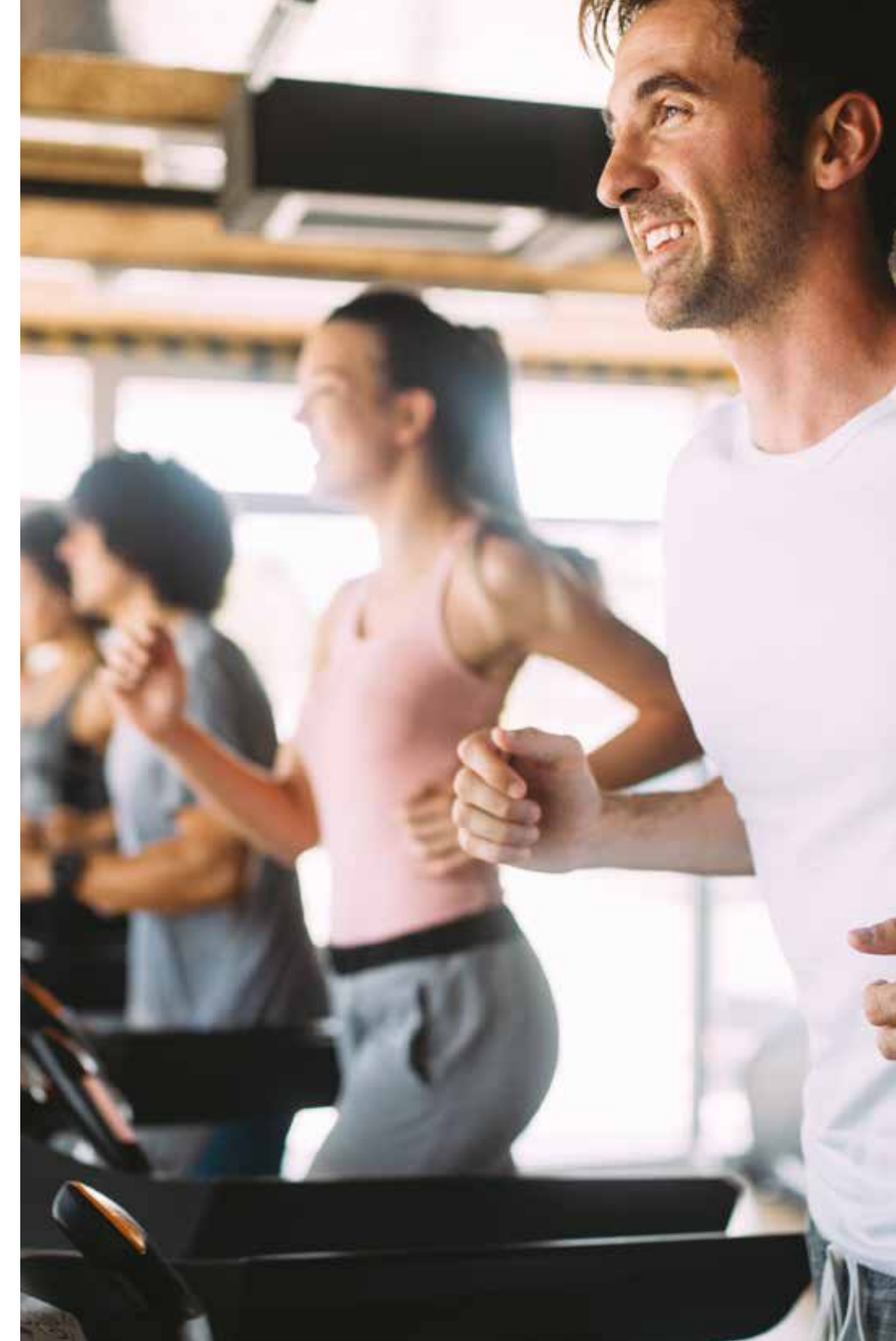




## First-Class Resort-Style Amenities

The homes are meticulously designed to amplify the opulence of contemporary living, and the urbanisation offers amenities that rival those of a premier resort.

---





## A Mediterranean Paradise

The landscaping is meticulously crafted, featuring indigenous plants and trees that have evolved in harmony with the Mediterranean climate. The swimming pools are a modern marvel, with four infinity pools cascading into each other, embodying the epitome of style and elegance.

---









# Your New Lifestyle

Residents can enjoy all of the little luxuries your private urbanisation has to offer, with access to the wellness centre which features a fully-equipped gym, and spa with sauna for relaxing after a workout. There is also a co-working centre, an essential space for remote working and modern living.

---







## A World of Experiences

Just a stone's throw away from the bustling seaside town of La Cala de Mijas, you'll find the perfect blend of modern living and traditional Spanish charm. This vibrant locale is home to a diverse mix of residents, both local and international, adding to its unique allure.

La Cala de Mijas is a treasure trove of amenities, from supermarkets and sports facilities to a weekly fresh produce market.

A picturesque seaside promenade leads you to the quaint port of Cabopino, offering a scenic journey along the coast.

This coastal stretch boasts some of the Costa del Sol's most stunning beaches, complemented by chic beach clubs and chiringuitos. These traditional beachside restaurants serve up the freshest fish and delectable Mediterranean cuisine, providing a true taste of Spain.

---



Ideally situated just 30 minutes from Malaga International Airport, La Cala de Mijas sits nestled between Fuengirola and the vibrant resort town of Marbella. A short five-minute drive further lands you in the glamorous yachting marina of Puerto Banús.

From this prime location, the fascinating region of Andalucia is yours to explore. Historic cities such as Seville and Granada are within driving distance, each offering their own unique cultural experiences.

Outdoor enthusiasts will relish the opportunity to hike, cycle, or horseback ride through the picturesque Andalusian countryside. The nearby Equestrian Centre provides the perfect starting point for your adventure.

---







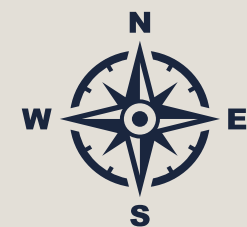
Beach lovers will be spoilt for choice with the Mediterranean Coast's soft, golden sands just minutes away. Whether you're seeking an adrenaline-packed day of jet skiing, a peaceful paddle-boarding session in crystal clear waters, or a fun day at a beach club, there's something for everyone. The tranquil retreat of the Artola nature reserve offers an unspoilt beach with natural dunes protected by a meandering wooden boardwalk.

As the sun sets, the night comes alive with possibilities. The gastronomic delights of Marbella are a short drive away, or you can choose to stay local and sample the myriad of restaurants and bars that line the streets of this charming town.

---







#### Main Golf Courses

- Sotogrande Golf
- Casares Golf
- Finca Cortesin
- El Paraiso Golf Club
- El Campanario Golf & Country Club
- Lauro Golf Resort
- La Resina Golf
- Flamingos Golf
- Villa Padierna Golf Club
- Atalaya Golf & Country Club
- Marbella Club Golf Resort
- La Quinta Golf
- Aloha Golf Club
- Real Club de Golf Las Brisas
- Río Real Golf
- Cabopino Golf Marbella
- Chaparral Golf Club
- La Cala Golf
- Mijas Golf
- Torrequebrada Golf

#### Sport Harbours

- Gibraltar
- Sotogrande
- La Duquesa
- Estepona
- Puerto Banús
- Puerto Deportivo de Marbella
- La Bajadilla Marbella
- Cabopino
- Fuengirola
- Benalmádena
- Málaga Muelle 1 (International cruise terminal)

#### International Airports

- Málaga (AGP)
- Gibraltar (GIB)

## LOCATION & DISTANCES

### LA CALA DE MIJAS

**8 KM**

8-10 MINUTES AWAY

### MIJAS

**18 KM**

20 MINUTES AWAY

### MÁLAGA AIRPORT

**33 KM**

30 MINUTES AWAY

### GIBRALTAR AIRPORT

**100 KM**

120 MINUTES AWAY

### PUERTO BANÚS

**34 KM**

27 MINUTES AWAY

### MARBELLA

**30 KM**

25 MINUTES AWAY





## Golfer's Paradise

The region's affectionate nickname of the 'Costa del Golf' reveals the passion for the game in this area of Southern Spain, and with 320 days of sunshine a year, a round of golf is a possibility all year round.

At the Wyndham Grand La Cala Golf Residences golfing enthusiasts are spoilt for choice with three top-class courses on the doorstep. Designed by master course designer Cabell Robinson, each has its own character and provides a fun and challenging game for all proficiencies. The impressive Golf Academy has professionals to hone new skills, as well as a driving range, putting greens, chipping and bunker facilities - all with wonderful views of the Mediterranean Sea on the horizon.

---







## Specifications



### Kitchens

The Dica kitchen, an epitome of exclusivity, comes fully equipped with high-end Miele appliances. It boasts kitchen counters crafted from smooth stone, complemented by cupboards in Natural Elm and Porcelain. The meticulous craftsmanship and superior quality of the design are evident in every detail.



### Electricity and Telecommunications

Televisions, radio connections and appliances by Samsung or similar are available in the living room and bedrooms, all of which connect to the high-speed Wi-Fi installed throughout.



### Bathrooms

The bathrooms are fitted with Hansgrohe (or similar) bathroom fixtures such as taps and waterfall showers. The bathrooms include de-misting technology mirrors from Genexia, and are adorned with gold marbled walls.



### Security and Climate Control

The Fermax (or similar) video door entry system ensures you always feel safe and secure, whilst the Airzone (or similar) climate control system with hot/cold conditioning ensures a comfortable environment all year round.

---







# Solara

## GROUND FLOOR

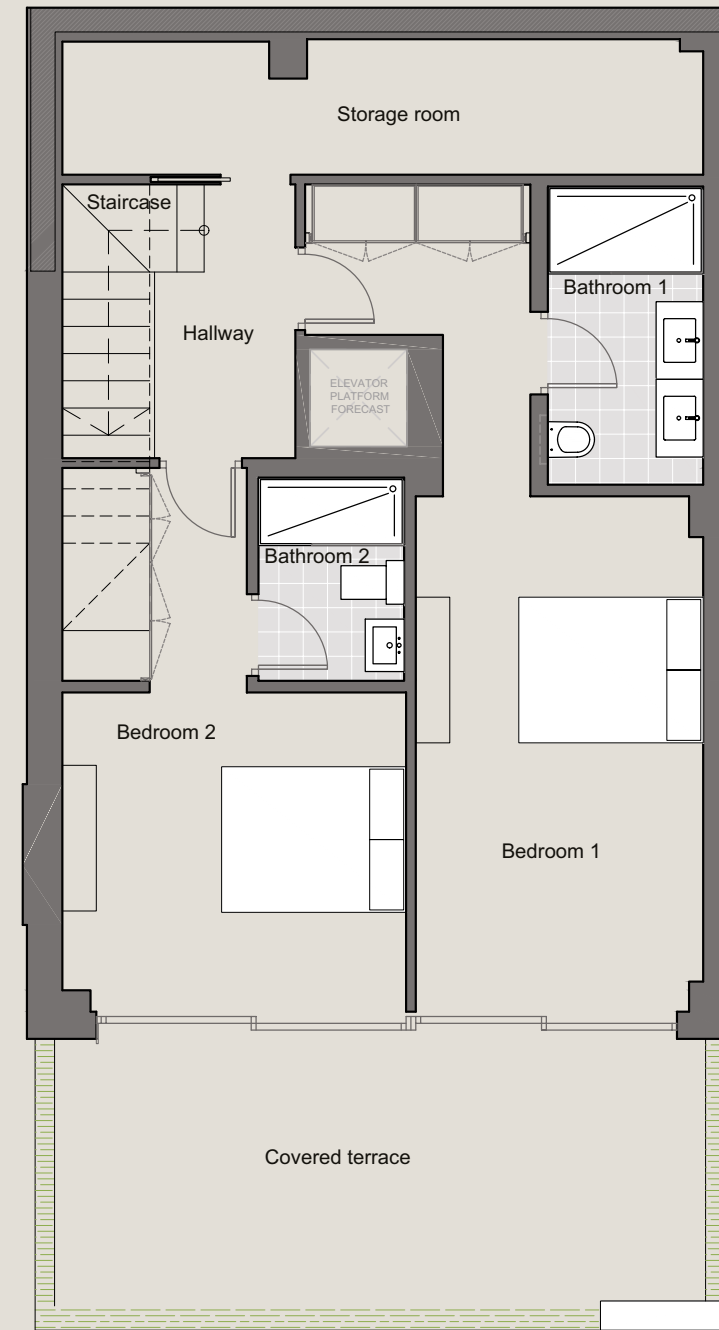
Bedroom 1	20.70 m <sup>2</sup>	Hallway	3.63 m <sup>2</sup>
Bedroom 2	15.86 m <sup>2</sup>	Staircase	13.14 m <sup>2</sup>
Bathroom 1	4.91 m <sup>2</sup>	Storage room	8.97 m <sup>2</sup>
Bathroom 2	3.14 m <sup>2</sup>	Uncovered terrace	18.29 m <sup>2</sup>

## FIRST FLOOR

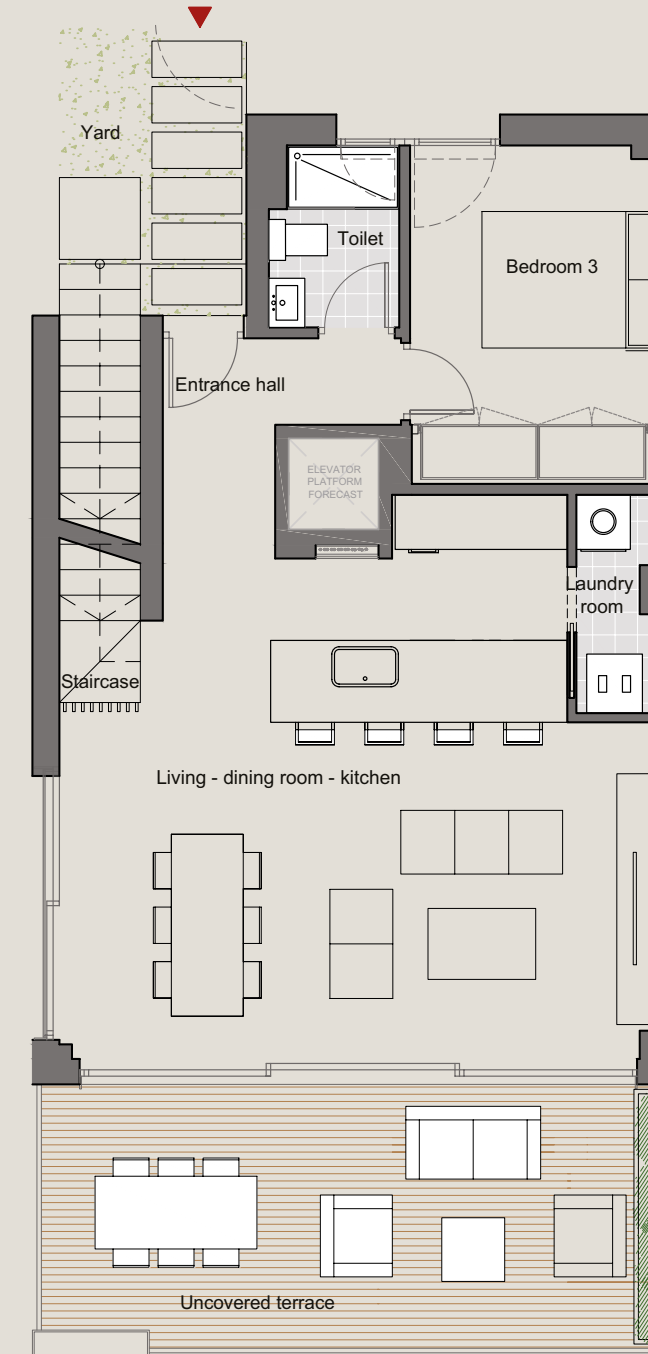
Entrance Hall	4.36 m <sup>2</sup>	Uncovered terrace	19.53 m <sup>2</sup>
Bedroom 3	9.99 m <sup>2</sup>	Laundry room	1.96 m <sup>2</sup>
Living/Dining room/Kitchen	34.62 m <sup>2</sup>	Staircase	1.50 m <sup>2</sup>
Yard	6.06 m <sup>2</sup>	Toilet	2.76 m <sup>2</sup>

## SOLARIUM FLOOR

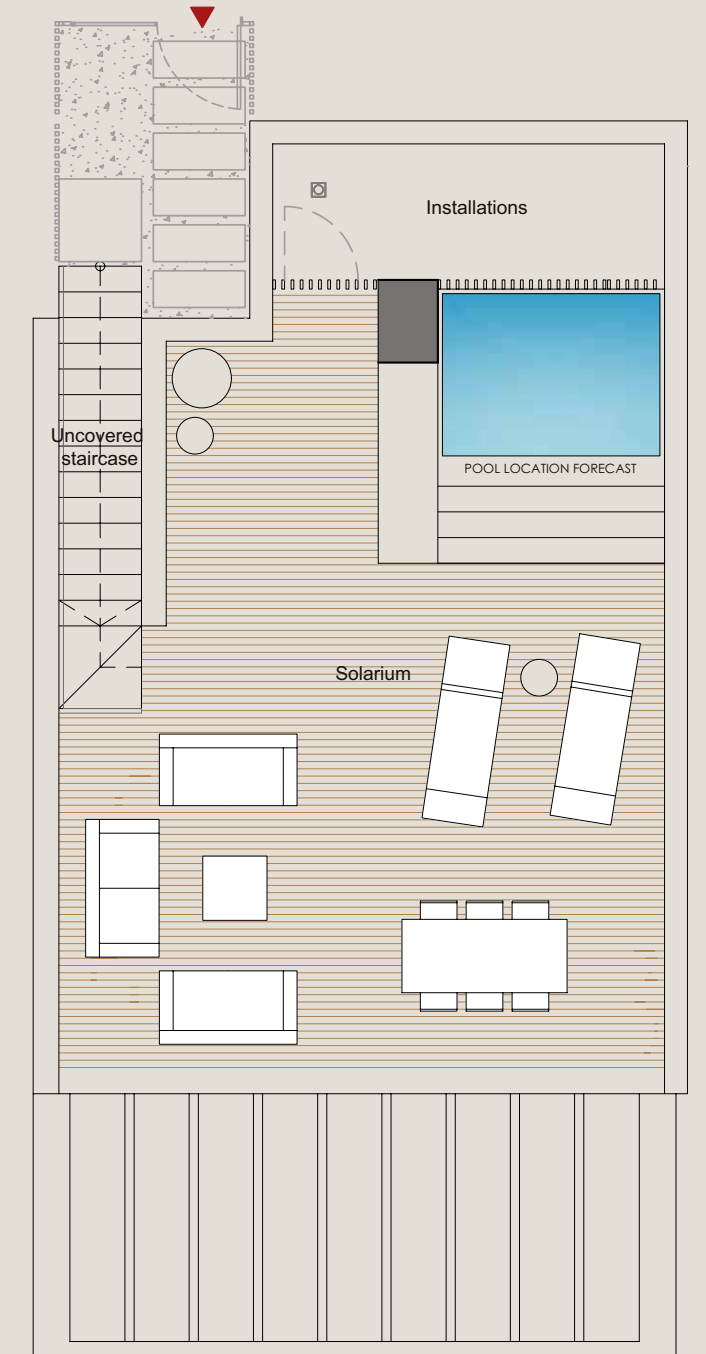
Installations	6.33 m <sup>2</sup>	Pool	2.87m <sup>2</sup>
Uncovered staircase	4.38 m <sup>2</sup>	Solarium	48.47 m <sup>2</sup>



GROUND FLOOR



FIRST FLOOR



SOLARIUM FLOOR



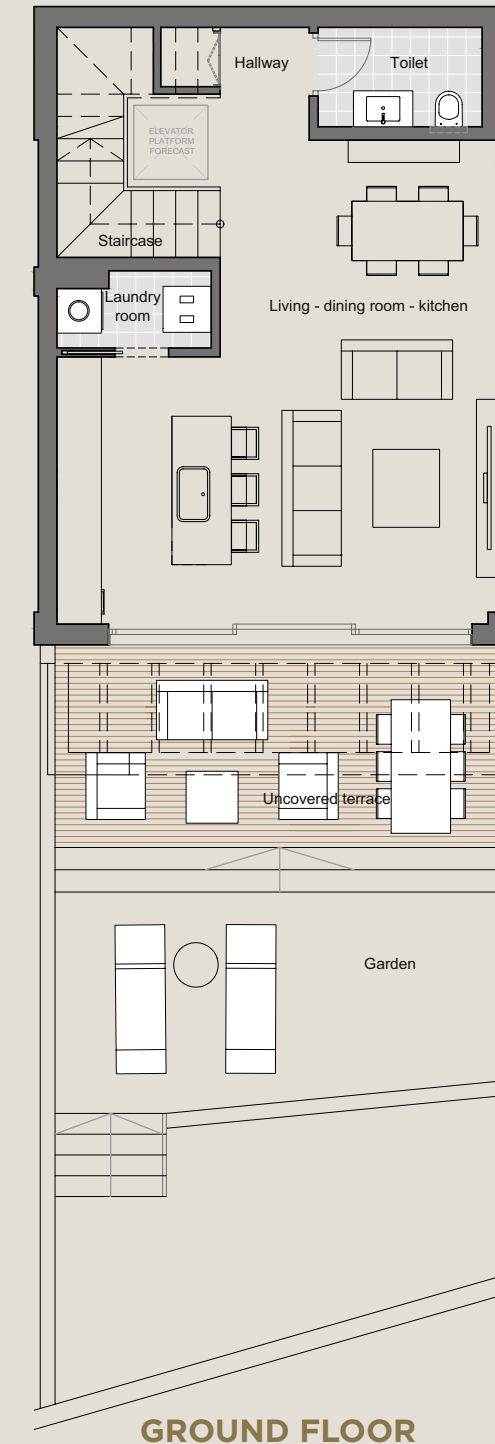
# Terraza

## GROUND FLOOR

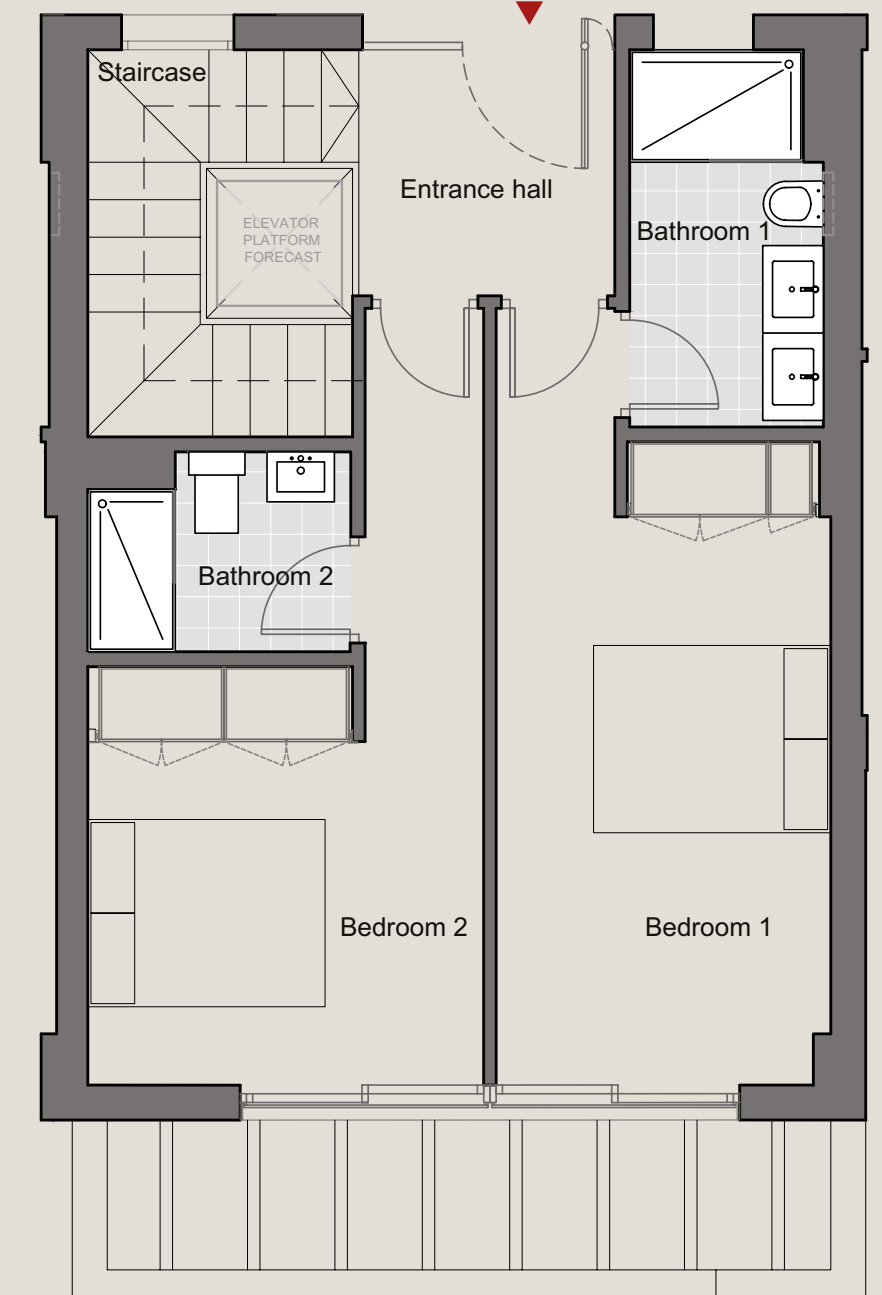
Bedroom 1	16.19 m <sup>2</sup>	Staircase	6.82 m <sup>2</sup>
Bedroom 2	12.78 m <sup>2</sup>	Hallway	3.10 m <sup>2</sup>
Bathroom 1	4.78 m <sup>2</sup>	Covered terrace	15.85 m <sup>2</sup>
Bathroom 2	3.12 m <sup>2</sup>	Garden	14.28 m <sup>2</sup>

## FIRST FLOOR

Entrance hall	2.43 m <sup>2</sup>	Living/Dining room/Kitchen	32.26 m <sup>2</sup>
Staircase	6.82 m <sup>2</sup>	Laundry room	1.97 m <sup>2</sup>
Toilet	2.63 m <sup>2</sup>	Uncovered terrace	17.42 m <sup>2</sup>



GROUND FLOOR



FIRST FLOOR





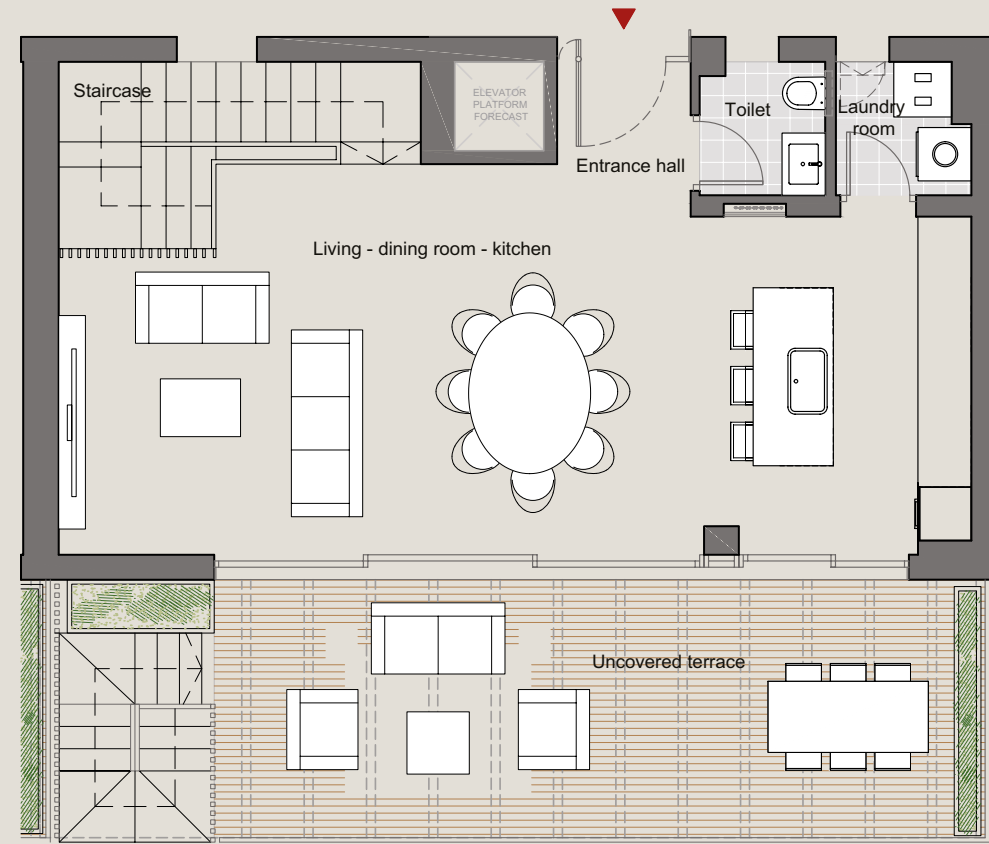
# Panorama 2

## GROUND FLOOR

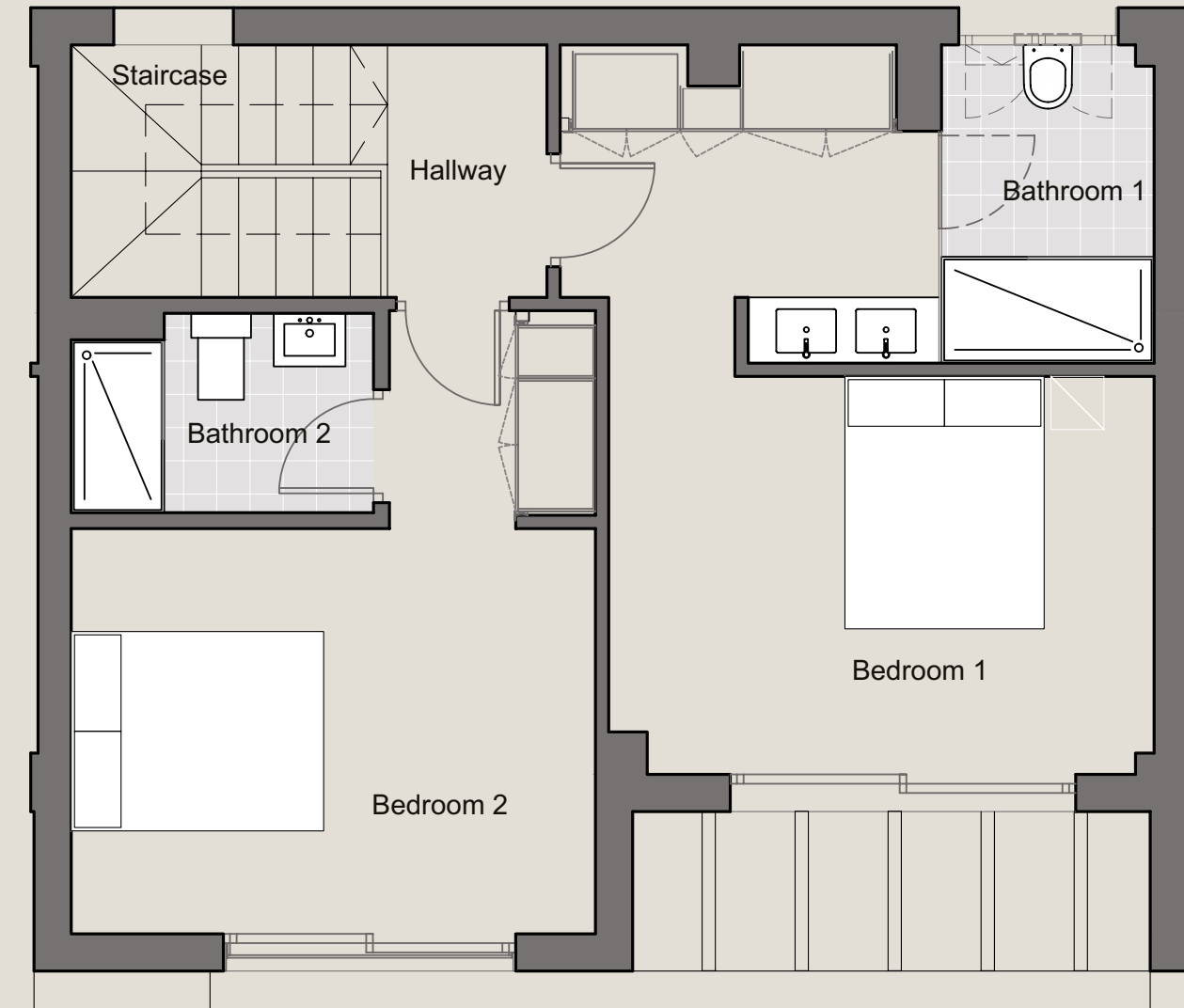
Laundry room	3.42 m <sup>2</sup>	Living/Dining room/Kitchen	29.31 m <sup>2</sup>
Toilet	1.94 m <sup>2</sup>	Covered terrace	5.10 m <sup>2</sup>
Hallway	3.13 m <sup>2</sup>	Uncovered terrace	15.40 m <sup>2</sup>
Staircase	5.00 m <sup>2</sup>	Garden	46.15 m <sup>2</sup>

## FIRST FLOOR

Bedroom 1	17.87 m <sup>2</sup>	Entrance hall	3.03 m <sup>2</sup>
Bedroom 2	14.51 m <sup>2</sup>	Staircase	4.47 m <sup>2</sup>
Bathroom 1	3.80 m <sup>2</sup>		
Bathroom 2	3.27 m <sup>2</sup>		



GROUND FLOOR



FIRST FLOOR



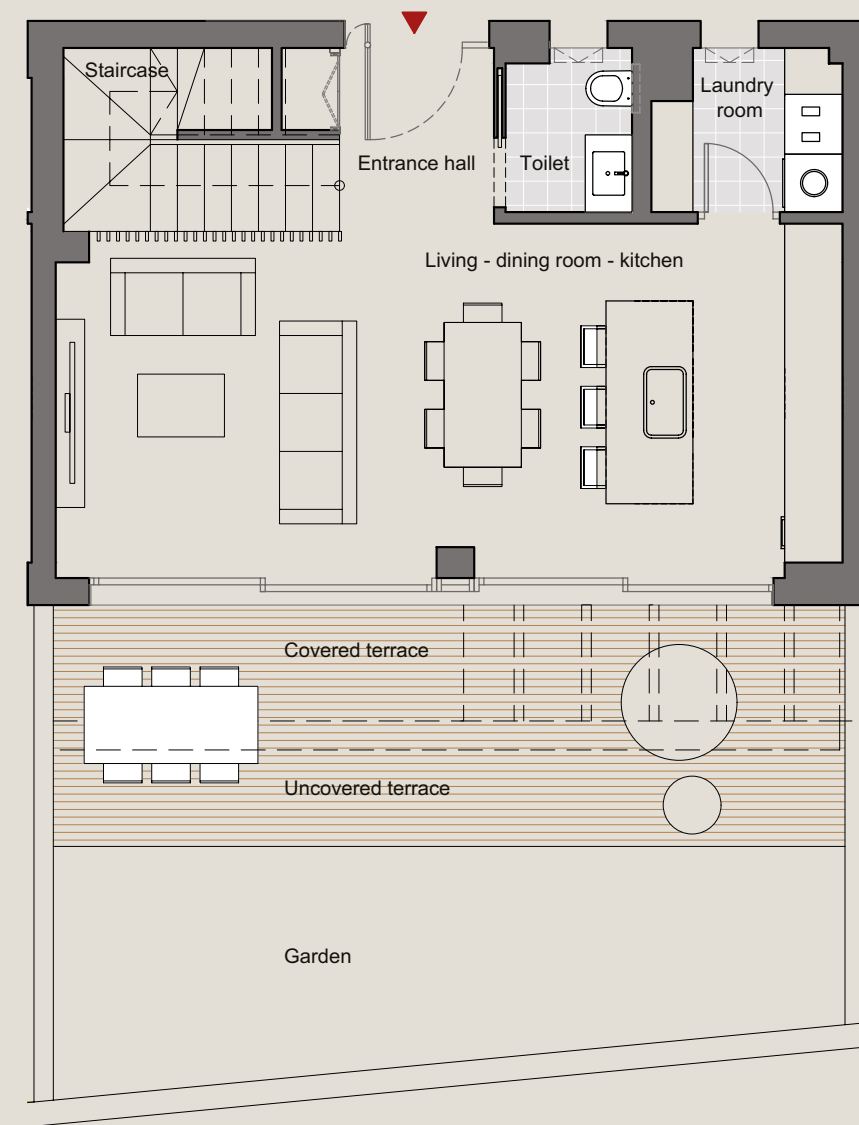
# Panorama 3

## GROUND FLOOR

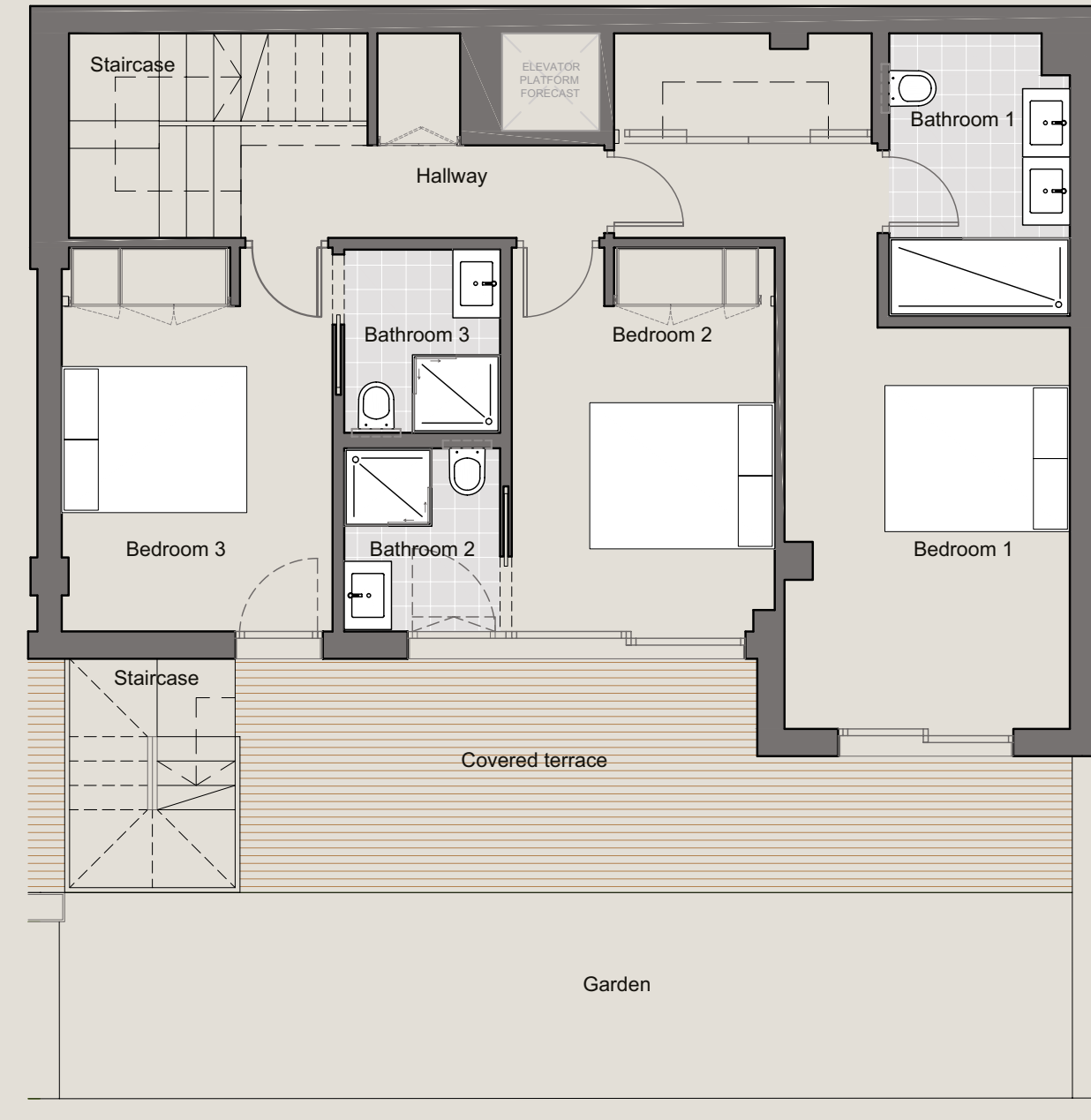
Living/Dining room/Kitchen	46.56 m <sup>2</sup>	Laundry room	2.17 m <sup>2</sup>
Covered terrace	3.23 m <sup>2</sup>	Toilet	2.03 m <sup>2</sup>
Uncovered terrace	24.87 m <sup>2</sup>	Entrance hall	2.61 m <sup>2</sup>
Garden	34.66 m <sup>2</sup>	Staircase	6.55 m <sup>2</sup>

## FIRST FLOOR

Bedroom 1	18.44 m <sup>2</sup>	Bathroom 1	5.25 m <sup>2</sup>
Bedroom 2	10.44 m <sup>2</sup>	Bathroom 3	3.01 m <sup>2</sup>
Bedroom 3	10.85 m <sup>2</sup>	Bathroom 2	3.01 m <sup>2</sup>
Hallway	3.54 m <sup>2</sup>	Staircase	6.30 m <sup>2</sup>



GROUND FLOOR



FIRST FLOOR



